

Cataloge 2020

Water, Our second Nature

Easy Drain® Xs-Z1 Complete set

COMPLETE SET
INCL. GRATE



Complete set incl. grate

TILE THICKNESS 5 - 25 MM

| Water seal 50 mm |

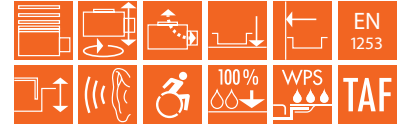


Incl. height adjustable legs



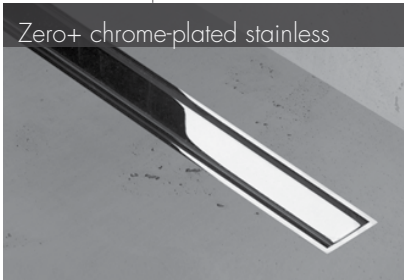
10 YEAR WARRANTY

WPS Technology - pre-assembled sealing membrane



Z1 Frame chrome plated stainless steel

Zero+ chrome-plated stainless

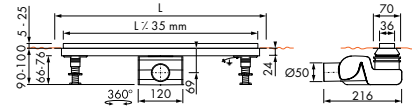
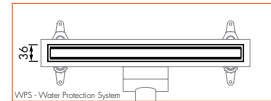


Complete set	Article code
Length 200 mm	AJXS-20-ZP
300 mm	AJXS-30-ZP
400 mm	AJXS-40-ZP
800 mm	XS-TAF-800-Z1P
900 mm	XS-TAF-900-Z1P
1000 mm	XS-TAF-1000-Z1P
1200 mm	XS-TAF-1200-Z1P

| Water seal 50 mm |



Incl. height adjustable legs



| Grate set + Build-in set | Length 20 - 200 cm

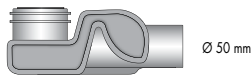
XS

Z-1 Frame brushed stainless steel

Zero+ brushed stainless steel



Complete set	Article code
Length 200 mm	AJXS-20-ZM
300 mm	AJXS-30-ZM
400 mm	AJXS-40-ZM
500 mm	XS-TAF-500-Z1-M
600 mm	XS-TAF-600-Z1-M
700 mm	XS-TAF-700-Z1-M
800 mm	XS-TAF-800-Z1-M
900 mm	XS-TAF-900-Z1-M
1000 mm	XS-TAF-1000-Z1-M
1100 mm	XS-TAF-1100-Z1-M
1200 mm	XS-TAF-1200-Z1-M
1300 mm	XS-TAF-1300-Z1-M
1400 mm	XS-TAF-1400-Z1-M
1500 mm	XS-TAF-1500-Z1-M
1600 mm	XS-TAF-1600-Z1-M
1700 mm	XS-TAF-1700-Z1-M
1800 mm	XS-TAF-1800-Z1-M
1900 mm	XS-TAF-1900-Z1-M
2000 mm	XS-TAF-2000-Z1-M



Ø 50 mm

Installation options

Capacity water seal



SEALING AND OTHER ASSEMBLY ACCESSORIES, see "Assembly accessories"



Wet area - Sealing system
see "Assembly accessories"



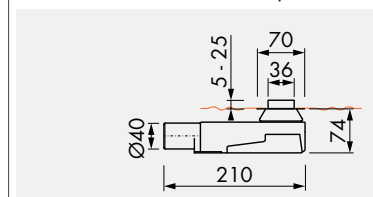
10 YEAR WARRANTY

M2 trap body, vertical outlet
Water seal 50 mm



Article code: EDM2-O

Dimensions XS with M2 flat siphon



M2 flat siphon, Water seal 28 mm



Article code: SPANANO1



Xs

Xs Z1
Zero+ brushed stainless steel